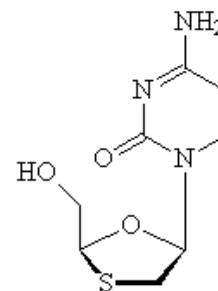


LAMIVUDINE

Globe Specification



Globe Reference:
CIPA 5010146

Formula	C ₈ H ₁₁ N ₃ - O ₃ S Mr= 229,26
Action and use	Anti – retroviral
Characteristics	White opaque crystalline powder, free of strange particles
Solubility	Conform
IDENTIFICATION	
. Infrared spectrum	Conform
. Liquid chromatographic	Conform
. Ultraviolet spectrum	Conform
ESSAYS	
. Specific Rotation to 25°C	-125°C to -145°C
. Water content	Not more than 2.0 per cent
. Residue on ignition	Not more than 0.15 per cent
. Heavy metals	Not more than 0.001 per cent (10 ppm)
Related Substances:	
- Ordinary impurity	Not more than 0.5 per cent
- Impurity total	Not more than 1.0 per cent
Particles size:	
- 100 mesh	Mínimum 30 per cent retained
ASSAY	
. Lamivudine Content in g by 100 g of dried substance	99,0 to 101,0 per cent
Storage	In well-closed containers
Packaging	25 Kg fiber drum with double polyethylene bags



GLOBE QUÍMICA
TECHNOLOGICAL EXPERTISE

SYSTEM OF MANAGEMENT QUALITY **ISO-9001/2000**
CERTIFICATE COMPANY IN GOOD MANUFACTURING
PRACTICES – **GMP**

GLOBE QUÍMICA S.A.

Rod. SP 332 KM 138 - Portão A PARTE Cosmópolis - SP - BRAZIL
Zip Code: 13150-000 Phone: 55 19 3872 87 00 Fax: 55 19 3872 87 01

PAGE: www.globequimica.com.br

E.MAIL: comercial@globequimica.com.br

FINE CHEMICALS